



# Certificate of Analysis

QA SAMPLE - INFORMATIONAL ONLY

ICAL ID: 20210603-128  
Sample: CA210602-005-016  
CBD Full Spectrum Balm 500mg 1oz, Standard Formula  
Strain: CBD Full Spectrum Balm 500mg 1oz, Standard Formula  
Category: Topical

Biota Biosciences  
Lic. #  
1601 5th. Ave., Suite 1100  
Seattle, WA 98101  
Lic. #

Batch#:   
Primary Size:   
Batch Size:   
Collected: 07/18/2023; Received: 07/18/2023  
Completed: 06/07/2021

Moisture NT Water Activity NT	$\Delta$ 9-THC <b>13.29 mg/unit</b>	CBD <b>437.78 mg/unit</b>	Total Cannabinoids <b>493.27 mg/unit</b>	Total Terpenes NT
--	--	------------------------------	---	----------------------

<b>Summary</b>	SOP Used	Date Tested	Complete
Batch	POT-PREP-005	07/18/2023	Complete



Scan to see results

## Cannabinoid Profile

1 Unit = container, 29.97 g.

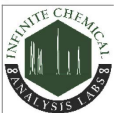
Analyte	LOQ	LOD	%	mg/g	mg/unit	Analyte	LOQ	LOD	%	mg/g	mg/unit
THCa	1.44	0.48	ND	ND	ND	CBDV	1.24	0.19	ND	ND	ND
$\Delta$ 9-THC	1.24	0.37	0.044	0.44	13.29	CBN	1.24	0.27	0.009	0.09	2.76
$\Delta$ 8-THC	1.24	0.20	ND	ND	ND	CBGa	1.24	0.30	ND	ND	ND
THCV	1.24	0.16	ND	ND	ND	CBG	1.24	0.17	0.011	0.11	3.27
CBDa	1.59	0.53	0.121	1.21	36.17	CBC	1.27	0.42	ND	ND	ND
CBD	1.24	0.16	1.461	14.61	437.78	<b>Total</b>			<b>1.646</b>	<b>16.46</b>	<b>493.27</b>

Total THC=THCa \* 0.877 +  $\Delta$ 9-THC; Total CBD = CBDa \* 0.877 + CBD; NR= Not Reported, ND= Not Detected, \*Reported by Dry Mass\*; \*analytical instrumentation used Cannabinoids:UHPLC-DAD, Moisture:Mass by Drying, Water Activity:Water Activity Meter, Foreign Material:Microscope\* \*Density tested at a temperature range between 19-24 °C, \*Water Activity tested at a humidity range between 0-90% Relative Humidity. All QA samples are sampled by the client, All California State Compliant samples sampled using SAMPL-SOP-001.

## Terpene Profile

Analyte	LOQ	LOD	%	mg/g	Analyte	LOQ	LOD	%	mg/g
---------	-----	-----	---	------	---------	-----	-----	---	------

NR= Not Reported thus no analysis was performed, ND= Not Detected thus the concentration is less then the Limit of Detection (LOD), \*analytical instrumentation used: HS-GC-MS\*



Infinite Chemical Analysis Labs  
8380 Miramar Mall #102  
San Diego, CA  
(858) 623-2740  
www.infiniteCAL.com  
Lic# C8-0000019-LIC

*Josh M Swider*

Josh Swider  
Lab Director, Managing Partner  
07/18/2023

Confident Cannabis  
All Rights Reserved  
support@confidentcannabis.com  
(866) 506-5866  
www.confidentcannabis.com



This product has been tested by Infinite Chemical Analysis, LLC using valid testing methodologies and a quality system as required by state law. All LQC samples were performed and met the prescribed acceptance criteria in 16 CCR section 5730, pursuant to 16 CCR section 5726(e)(13). Values reported relate only to the product tested. Infinite Chemical Analysis, LLC makes no claims as to the efficacy, safety or other risks associated with any detected or non-detected levels of any compounds reported herein. This Certificate shall not be reproduced except in full, without the written approval of Infinite Chemical Analysis, LLC.